



# TECHNICAL SPECIFICATIONS

Updated 06.15.18



## TABLE OF CONTENTS

General Information.....	3
Stage Information.....	4
Dressing Rooms.....	5
Wardrobe Room.....	5
Lighting Equipment and Power.....	6
Audio Equipment and Power.....	6
Line Set Schedule.....	8
IMAG Projection System.....	9
Stage level Drawing.....	10
Basement Level Drawing.....	11
Special Effects .....	12
Truck and Bus Parking.....	12
Catering.....	12
Local Fact Sheet.....	13
Restaurants .....	16
Maps.....	17
Directions.....	18
Seating Chart.....	19





## TECHNICAL & OPERATIONS STAFF CONTACTS

### TECHNICAL DIRECTOR

Josh Anderson

Cell: 706.615.2425

Email: [janderson@dpacnc.com](mailto:janderson@dpacnc.com)

### MAILING/LOADING ADDRESS:

123 Vivian Street  
Durham, NC 27701

### GENERAL MANAGER

Bob Klaus

919.281.0586

[bklaus@dpacnc.com](mailto:bklaus@dpacnc.com)

### SETTLEMENT & MERCHANDISE

Stuart Klein

919.281.0816

[sklein@dpacnc.com](mailto:sklein@dpacnc.com)

### DIRECTOR OF Event Services

Michael Louthan

919.281.0478

[mlouthan@dpacnc.com](mailto:mlouthan@dpacnc.com)

### DIRECTOR OF TICKETING

Kelley Monts de Oca

919.281.0813

[kmontsdeoca@dpacnc.com](mailto:kmontsdeoca@dpacnc.com)

### SECURITY

Staff one, Inc

Mel Black

919.856.0800

[mblack@staffoneservices.com](mailto:mblack@staffoneservices.com)

### MUSICIANS CONTRACTOR

Wayne Leechford

919.612.4199

[DPACmusicians@aol.com](mailto:DPACmusicians@aol.com)

### HEAD CARPENTER

Les Wells

[lwells@dpacnc.com](mailto:lwells@dpacnc.com)

### HEAD PROPS

Karen Byers

[kbyers@dpacnc.com](mailto:kbyers@dpacnc.com)

### HEAD ELECTRICIAN

Joshua Aldridge

[jaldridge@dpacnc.com](mailto:jaldridge@dpacnc.com)

### HEAD AUDIO

Erik Ramquist

[eramquist@dpacnc.com](mailto:eramquist@dpacnc.com)

## SEATING CAPACITY

<b>Total Capacity</b>	<b>2712</b>
Pit	29
Orchestra	1391
Grand Tier	519
Front Balcony	460
Rear Balcony	313

## LOCATION

The Durham Performing Arts Center (DPAC) is located at 123 Vivian Street, just off the Durham Freeway (Highway 147, Exits 12B or 13), and adjacent to the famous Durham Bulls Athletic Park. We're part of the award-winning American Tobacco District and access is fast and convenient from all 3 of 20

**STAGE INFORMATION AND MEASUREMENTS**

**Proscenium:** 49'11" W by 30'5" H

**Stage:** Plaster Line to back wall: 49'8"  
 Width 114' 3"  
 C/L to SR Locking Rail: 60'3"  
 C/L to SL Wall: 54'0"

**Apron:** Plaster line to Down Stage edge: 5'6"

**Grid Height:** 70'0"

**Loading:**

Two (2) roll up doors 10'x10' lead from loading dock, across backstage hallway, through two (2) more 10'x10' roll up doors onto the up-right portion of the stage. Total distance from truck to stage is approximately 15 - 20'.

Loading dock can accommodate three (3) 53' trailers at a time. There is one dock plate leveler in the center position.

DPAC owns one portable dock plate, allowing for two trucks to be unloaded at once.



Fly Rail

**Counterweight Rigging:**

System:	Single Purchase
# of Line Sets:	80
Centers:	6"
Arbor Capacity:	2,000lbs.
Batten Length:	66'
Travel Distance:	69'
Amount of weight:	40,000lbs

**Soft**

Main Curtain	1	2 panels 30' W x 30' H
Valence	1	60' W x 10' H
Legs	6 pairs	10' W x 30' H
Border	6	66' W x 10' H
Full Stage Blacks	2	2 panels 30' W x 30' H
White & Black Scrim	1 of each	60' W x 30' H
Cyclorama	1	60' W x 30' H

## STAGE INFORMATION AND MEASUREMENTS

### Orchestra Pit:

Serapid chain link lift

Measurement: 8'6" deep at center x 46' wide.

Pit can rise to stage level and extend the stage.

## DRESSING ROOMS AND WARDROBE



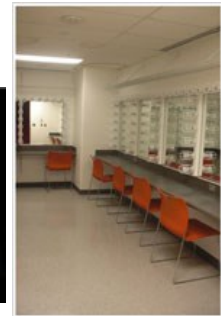
Green Room



Chorus Dressing Room



Star Dressing Room



Dressing Room

### Dressing Rooms:

Star Dressing Rooms (4): (10' x 11') Located stage left, stage level. Complete with mirrors, lights, toilet, sink, shower, two (2) chairs and small refrigerator/freezer & wall to wall carpet. Each star dressing room accommodates two (2) performers.

Principal Rooms (3): (13' x 20') Located down stairs on level beneath the stage. Accommodates 6 performers and come equipped with a toilet, shower, sink, mirrors and chairs.

Chorus Rooms(4): (18' x 25') Located down stairs on level beneath the stage. These rooms' capacity varies in range from 12 to 15 performers. Each room contains two (2) showers, two (2) toilets, 3 sinks, mirrors and chairs.

Green Room: (19' x 27') Located stage left, stage level. This room comes equipped with refrigerator, ice machine, coffee maker, microwave, sink, couch, end chair, coffee table, end table, and wall to wall carpet.

### Wardrobe Room (95' x 26'):

Located downstairs, beneath the stage.

Three (3) washers and three (3) dryers.

Three (3) Ironing Boards, three (3) Irons and one (1) steamer



Wardrobe Room



## LIGHTING SYSTEM AND POWER

### Circuiting and Dimming:

All show dimmers are ET IGBT 2.4kw modules  
Ninety-six (96) circuits located Front of House  
Twenty-four (24) on the Mezzanine Rail  
Twenty-four (24) on overhead catwalk  
Twelve (2) each in a near and far box boom position on either side of the house.  
Ninety-six (96) circuits located over stage, 48 fed from either side.

### Equipment:

Control Board: ETC Element with 60 subs and 500 channels

Spot Lights: Three (3) – Robert Juliat 2500w HMI spots

#### Lighting Instruments:

Ninety-Five (95) - ETC Source 4 Pars (w/wide, medium, narrow & very narrow)  
Ninety-Three (93) – ETC Source 4 19 degree Lekos  
Seventy-Five (75) – ETC Source 4 26 degree Lekos  
Eighty-Three (83) – ETC Source 4 36 degree Lekos  
Twelve (12) – ETC Source 4 50 degree Lekos  
Twelve (12) – 3 cell far cycs

### Lighting Power:

2400 amps 3 phase service located downstage right. Accepts cams only.  
One (1) – 600 amp tie in  
Four (4) – 400 amp tie ins  
Two (2) – 200 amp tie ins  
Two (2) – 100 amp tie ins  
One (1) – 100 amp disconnect that accepts tails

## AUDIO SYSTEM AND POWER

### Equipment:

Flown center, left and right array along with two (2) ground stacked subs made up of the following:

Center Cluster – Fourteen (14) Meyer M2Ds

Left/Right – Twelve (12) Meyer Micas flown per side

Subs – Three (3) Meyer 1100LFC per side ground stacked

Front Fills – Four (4) EAW JF-80's mounted in the lip of the stage

Under Balcony Delays – 16 Meyer MID

Box fills – 2 Meyer MYA-UPA (fixed position)

In and Out Fills – 4 Meyer MYA-UPA

System Control – 3 Galileo 616 controlled from wireless tablet

## AUDIO SYSTEM AND POWER

**Snake Runs:** All show snake runs must run through cable passes!!!!

Whirlwind 56 pair permanently installed downstage left. Cable pass access to FOH mix position is available either downstage left or right, down to the orchestra pit, and up to the FOH mix position via two 14" diameter tubes that run in a straight pull.

**Intercom:**

Four (4) channels of Clear Com have been run throughout the stage space  
Twelve (12) belt packs and head sets

**Sound Power:**

One (1) – 200 amp isolated 3 phase disconnect located downstage left. Accepts tails or cams.

**Console:** Midas Pro6

**Mix Position:** Located rear center Orchestra. Mix position is 23' 3" wide x 10' 1" deep





**LINE SET SCHEDULE**

**LINE SETS 0, 18, 37, 56 & 75 CANNOT BE KICKED DOWNSTAGE**

#	Distance	
0	8"	Valence
1	1' 2"	
2	1' 8"	Main Curtain
3	2' 2"	
4	2' 8"	
5	3' 2"	
6	3' 8"	
7	4' 2"	
8	4' 8"	
9	5' 2"	
10	5' 8"	
11	6' 2"	
12	6' 8"	
13	7' 2"	
14	7' 8"	
15	8' 2"	
16	8' 8"	
17	9' 2"	
18	10' 2"	
19	10' 8"	
20	11' 2"	
21	11' 8"	
22	12' 2"	
23	12' 8"	
24	13' 2"	
25	13' 8"	
26	14' 2"	
27	14' 8"	
28	15' 2"	
29	15' 8"	
30	16' 2"	
31	16' 8"	
32	17' 2"	
33	17' 8"	
34	18' 2"	
35	18' 8"	
36	19' 2"	
37	20' 2"	
38	20' 8"	
39	21' 2"	

#	Distance	
40	21' 8"	
41	22' 2"	
42	22' 8"	
43	23' 2"	
44	23' 8"	
45	24' 2"	
46	24' 8"	
47	25' 2"	
48	25' 8"	
49	26' 2"	
50	26' 8"	
51	27' 2"	
52	27' 8"	
53	28' 2"	
54	28' 8"	
55	29' 2"	
56	30' 2"	
57	30' 8"	
58	31' 2"	
59	31' 8"	
60	32' 2"	
61	32' 8"	
62	33' 2"	
63	33' 8"	
64	34' 2"	
65	34' 8"	
66	35' 2"	
67	35' 8"	
68	36' 2"	
69	36' 8"	
70	37' 2"	
71	37' 8"	
72	38' 2"	
73	38' 8"	
74	39' 2"	
75	39' 8"	
76	45' 7"	
77	46' 3"	
78	46' 11"	
79	47' 7"	

## IMAG PROJECTION SYSTEM



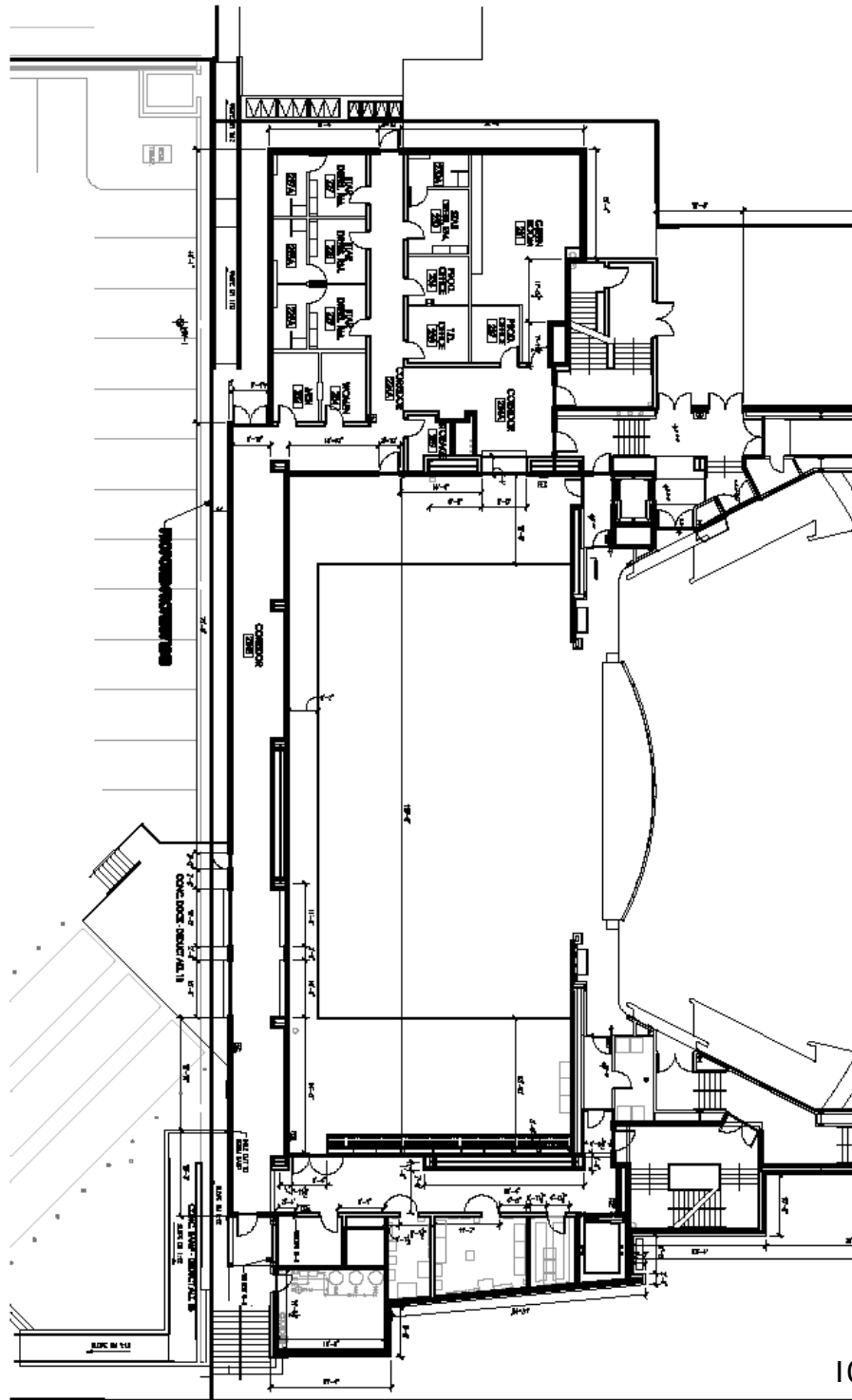
### **IMAG PROJECTION SYSTEM:**

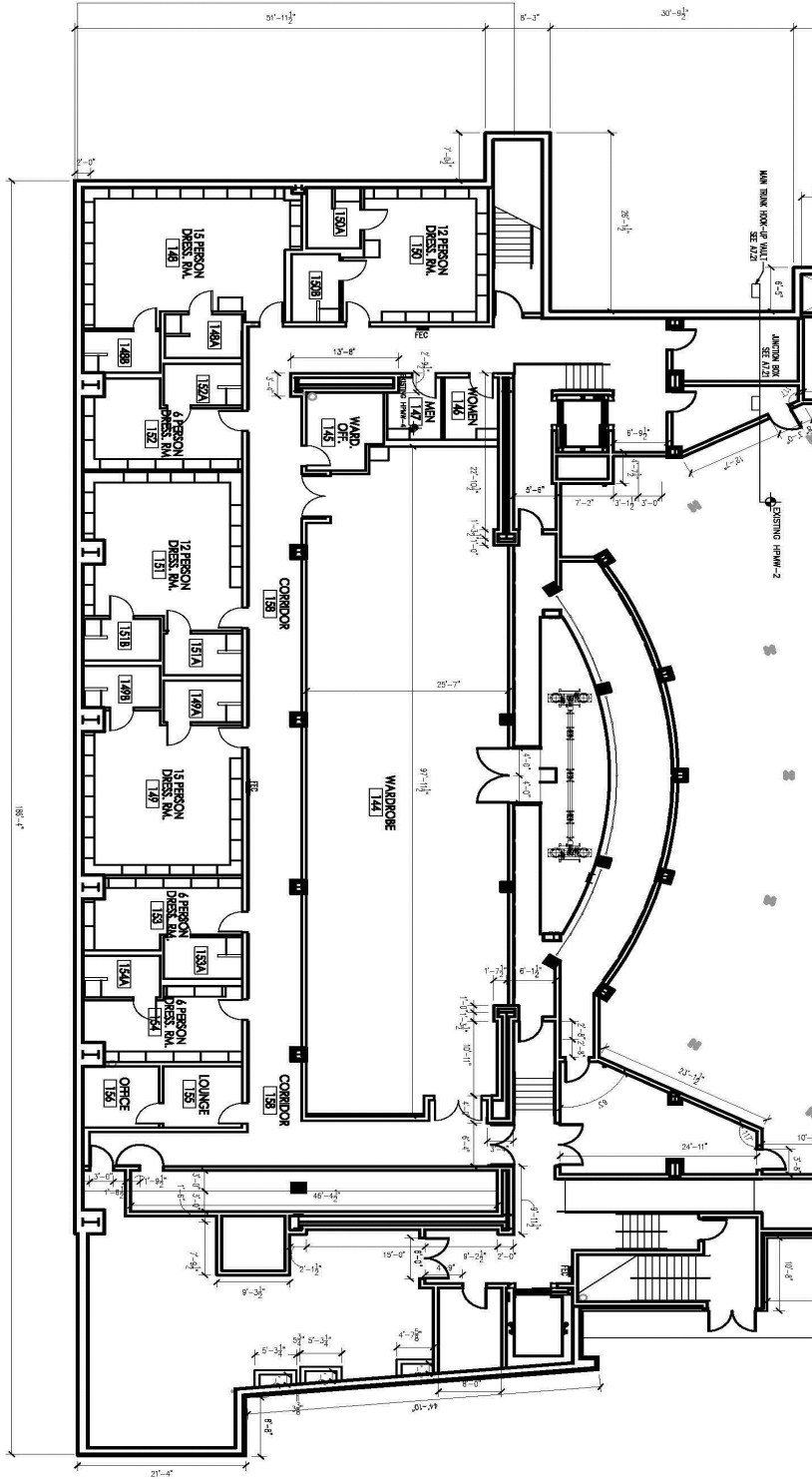
The Durham Performing Arts Center has an image magnification system that is available for use at a variable charge dependent upon amount of cameras used to provide IMAG. The system consists of:

- Two (2) - Sanyo PDG-DET100L 7.5K lumen projectors each with a Sanyo LNS-T5I Lens
- Two (2) - AV Stumpfl 9' x 16' front projection screens that are rigged on either side of the proscenium (please see photo above).
- One (1) - Analogway V-SCALE VSL300 Scan Converter
- One (1) - Extron CAT 5 Transmitter
- Two (2) - Extron CAT 5 Receivers

DPAC does not own cameras, however, cameras and operators may be acquired. Contact Technical Director for more information.

**STAGE PLAN**





## SPECIAL EFFECTS POLICIES

- Technical Director must be made aware of any special effects (such as, but not limited to: haze, low lying fog, confetti, and pyrotechnics) prior to the start of load in.
- DPAC employs a fire watch via the Durham City Fire Marshall's office.
- Any pyrotechnic effect or open flame must be signed off by the Fire Marshall at a time mutually agreed upon before the start of the performance.
- Due to the nature and sensitivity of the fire system, **ALL** doors leading to dressing room areas and off of the stage, must be **CLOSED** upon commencement of theatrical special effects.
- A member of the show **MUST** notify a member of the DPAC production staff prior to the first use of effects, as we must be certain that the fire system is in the proper operating mode to allow for such use.

## TRUCK AND BUS PARKING

- Three busses may park in the unloading zone located on the east side of the building on Mangum Street. Please note the sign notating the fire lane. Busses and trucks parked in the fire lane will be made to move.
- Additional parking for more than 3 busses can be acquired by notifying Technical Director at least three (3) days before the scheduled load in time.
- Three (3) trucks may stay in the loading dock at any time. If there are more than three trucks, **arrangements must be made by the touring production for overflow parking.** DPAC does not have control of any of the areas surrounding the venue.

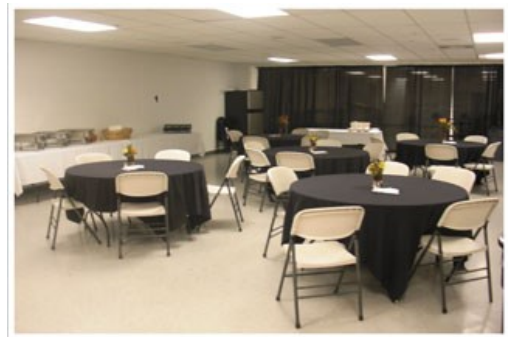
## CATERING

If a show utilizes tour catering or any type of mobile kitchen catering service, the following rules apply:

-Cooking may occur on the sides of the building only and not beneath the parking deck behind the theater. Location of cooking will be confirmed during advance.

-Dining room is located one level under the stage. Freight elevator located down stage right serves access.

-All trash must be brought to dumpsters located in the truck parking portion of the loading dock. Washing of dishes is done via a sink, with hot and cold water, located in the dining room.





## LOCAL FACT SHEET

### TRANSPORTATION

#### **Car Service:**

White Horse Private Transportation 919-782-5893  
John Setzer jsetzer@ridewhitehorse.com

#### **Rent-a-Car:**

Enterprise Rent-a-Car 919-682-8720  
409 S. Roxboro St.  
Durham, NC 27701

#### **Taxis:**

UBER and LYFT serve the city of Durham

Durham's Best Cab Company 919-680-3330  
1005 West Chapel Hill St.  
Durham, NC 27701

### MEDICAL

#### **Hospital:**

Duke University Hospital 919-684-8111  
2301 Erwin Rd.  
Durham, NC 27710

Durham Regional Hospital 919-470-4000  
3643 N. Roxboro St.  
Durham, NC 27704

#### **Rock Doctor:**

Dr. Allen Mask: Cell: 919-616-7668  
Office: 919-231-3131

#### **Urgent Care:**

Duke Urgent Care 919-383-4355  
1821 Hillandale Rd. #24A  
Durham, NC 27705

#### **Ear, Nose & Throat:**

North Carolina Ear, Nose and Throat 919-595-2000  
4102 N. Roxboro Rd.  
Durham, NC 27704



## LOCAL FACT SHEET

### OB/GYN

Durham Women's Clinic 919-471-2273  
209 East Carver St.  
Durham, NC 27704

### Dentist

Bull City Dental 919-680-3531  
106 W. Parrish St. #1  
Durham, NC 27701

### Massage Therapist:

Michele Cochrane Message Therapy 919-219-0788  
1301 Wake Forest Rd, Ste 202  
Raleigh, NC 27604

### Voice:

Duke Voice Care Center 919-681-4984  
3480 Wake Forest Road  
Suite 404  
Raleigh, NC 27609

### Pharmacy:

Walgreens 919-530-8774  
710 Fayetteville St.  
Durham, NC 27707

Walgreens – 24 Hours 919-544-6430  
6405 Fayetteville Rd.  
Durham, NC 27713

### Other Services:

**Bank:**  
Sun Trust 919-425-0989  
200 N. Mangum St.  
Durham, NC 27701

Wells Fargo 919-416-6050  
2000 W. Main St.  
Durham, NC 27701

Bank of America 919-956-2254  
1058 West Club Blvd.  
Durham, NC 27701



## LOCAL FACT SHEET

BB&T 919-687-7200  
505 S. Duke St.  
Durham, NC 27701

PNC Bank 919-687-3700  
500 W. Morgan St.  
Durham, NC 27701

### Post Office:

U.S. Post Office 919-321-4530  
323 E. Chapel Hill St.  
Durham, NC 27701

Fed Ex/Kinkos 919-286-1000  
610 9<sup>th</sup> St.  
Durham, NC 27705

### Laundry/Dry Cleaner:

Regency Cleaners 919-493-5815  
3912 University Drive  
Durham, NC 27707

### Grocery Store:

Super Target 919-765-0008  
4037 Durham Chapel Hill Blvd.  
Durham, NC 27707

### Hardware Store:

Home Depot 919-220-5811  
1700 N. Pointe Dr.  
Durham, NC 27705

### Malls:

North Gate Mall 919-286-4400  
1058 W. Club Blvd.  
Durham, NC 27701

Streets at Southpoint 919-572-8808  
6910 Fayetteville Rd.  
Durham, NC 27713

## RESTAURANTS

Please see Technical Director for a menu book of establishments conveniently located to the Performing Arts Center.

### Restaurants located in the American Tobacco District:

- Tyler’s Taproom
- Tobacco Road Sports Café
- Mellow Mushroom Pizza
- Cuban Revolution
- Moe’s Southwest Grill
- Basan Bull City Sushi
- Only Burger
- The Bullpen

## MAPS



## Restaurant Location Map



AMERICAN TOBACCO

AmericanTobaccoCampus.com



## **DIRECTIONS**

### **From the North via I-85 South:**

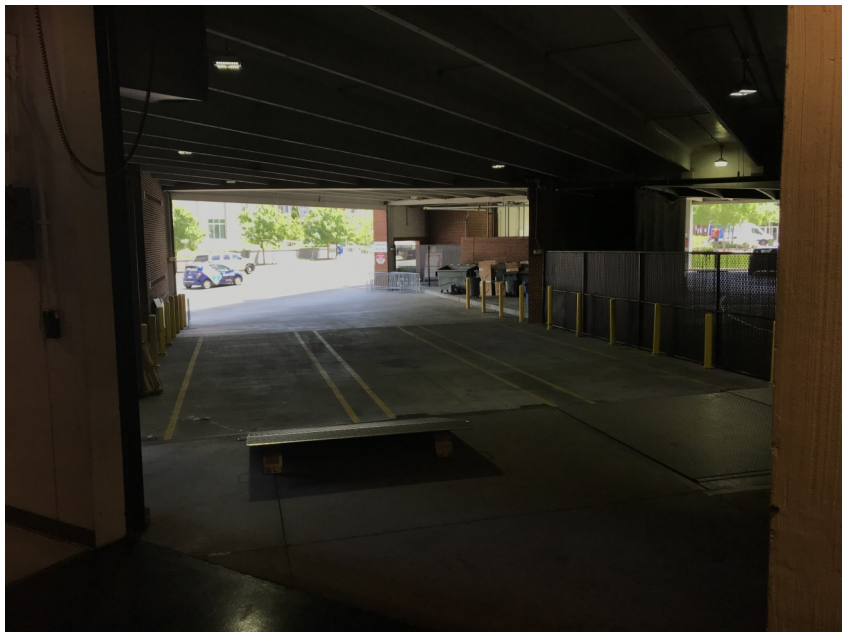
- Exit 174B to US 15-501 South
- Exit 108 to Durham Freeway South (Hwy 147)
- Exit 13 to Chapel Hill Street, Turn left at ramp
- Turn right at third stoplight onto Pettigrew street
- Turn right at second stoplight onto Mangum Street
- Loading dock is located at end of striped unloading lane on right

### **From the South via I-85 North:**

- Exit 172 onto Durham Freeway / Highway 147 South
- Exit 13 at Chapel Hill Street
- Left at top of exit ramp onto Chapel Hill Street
- Right at the third stoplight on Pettigrew Street
- Turn right at second stoplight onto Mangum Street
- Loading dock is located at the end of striped unloading lane on right

### **From the East via I-40 West:**

- Exit 279-B onto 147 North toward downtown Durham (Durham Freeway)
- Exit 12-B at Business 15-501 and Mangum / Roxboro Street
- Turn right at stoplight at end of ramp onto Roxboro Street
- Turn left at first stoplight onto Pettigrew Street
- Turn left at first stoplight onto Mangum Street
- Loading dock is located at the end of striped unloading lane on right



**SEATING CHART**

**REAR BALCONY**  
3rd Level  
Sections 8,9,10

**FRONT BALCONY**  
3rd Level  
Sections 8,9,10

**GRAND TIER**  
2nd Level  
Sections 5,6,7

**ORCHESTRA**  
Floor Level  
Sections 1,2,3,4

 ACCESSIBLE/  
BARRIER-FREE  
SEATS





## **REMARKS**

On behalf of the entire DPAC team, I would like to say a quick thank you for your interest in DPAC. Whether you happen to be a prospective client, Production Manager, Tour Manager or Company Manager, our goal here in the Production Department is to give you the smoothest day that we can in hopes of providing the patrons of DPAC the best experience possible.

Please do not hesitate to ever give me a call or send along an email. I'm here to help in any way that I can.

Safe travels on the road, and I look forward to seeing you soon!

All the best,

Josh Anderson  
Technical Director  
Durham Performing Arts Center  
123 Vivian St.  
Durham, NC 27701  
Office (919)281-0589  
Fax (919)281-0818  
Cell (706)615-2425 (preferred contact number)

## **SMOKING POLICY**

### **THE LOADING DOCK IS A STRICTLY NO SMOKING AREA**

**A DEDICATED SMOKING AREA IS LOCATED DOWN THE  
STEPS FROM THE LOADING DOCK IN THE EAST  
PARKING DECK**

**THANK YOU IN ADVANCE FOR YOUR COOPERATION IN THIS  
MATTER**