

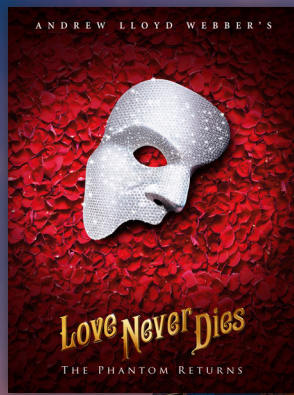
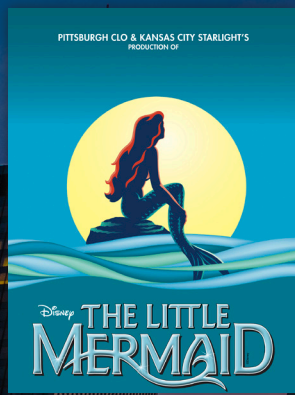
Welcome to SunTrust Broadway!

Welcome to our tenth season of SunTrust Broadway at DPAC. You are part of an exclusive group of Broadway fans whose support has helped SunTrust Broadway become the #1, one-week Broadway series in the country.

DPAC continues to be at the top of the list as the biggest new hit shows take to the road to perform at America's best performing arts centers. Our new season features many of Broadway's recent top-ten shows, along with brand new North American tours of shows made famous in London's West End and Australia.

Our season membership program has grown to record-breaking numbers, and you're now locked in with the best seats and the best prices for these sure sell-outs. Whether this is your first season, you've been with us for 10 GREAT YEARS, or anywhere in between, we welcome you with friendly smiles and stand committed to making your every visit to DPAC the best it can be. Thank you for joining us as we celebrate

10 GREAT YEARS



We're Here to Help: Three Easy Ways to Contact Us

Email:
 Broadway@DPACnc.com

Phone:
 919-281-0595

In-Person:
 BlueCross BlueShield of North Carolina
TICKET CENTER at DPAC
 123 Vivian Street
 Durham, NC 27701

Tips for a Great Visit

Let go of any ideas you may have about a performing arts center and open yourself up to a new live entertainment experience unlike any other you'll find in the region.

We're Here to Help.

Above all, we hope you enjoy your experience at DPAC, and please know that we are here to help. If you have a question or need assistance of any kind, please just ask a member of our staff. We believe in great entertainment experiences, and we want to be our guests' favorite place for live events.

There is No Dress Code.

While going to DPAC is certainly a special occasion, there is no required dress code. Some guests enjoy dressing up and making a special night of it, and you can too, but most of all we want our guests to be comfortable.

We would ask you to politely consider other guests' possible allergic reactions when applying fragrances like perfumes or colognes, as DPAC is a closed area with many people in close proximity to each other.

Come Early. Don't Be Late.

We recommend planning your travel so that you arrive in downtown Durham no later than 45-60 minutes before show time. You should then budget about 15 minutes to park and walk to the theater. Our lobby doors open 60 minutes prior to show time; seating areas open 30 minutes prior to show time for Broadway.

Late Arrivals.

Most shows require that our ushers hold late arrivals in the lobby until a suitable pause in the program. The timing of allowing late arrivals into the seating area is determined by the show and designed to cause as little disruption as possible.

Note: On show dates that coincide with a Durham Bulls home game, please allow yourself an additional 10-15 minutes travel time.



Photo Credit: HuthPhoto

Show Length.

Most shows usually last two to three hours and typically have an intermission. You can find the exact schedule posted in the lobby near the doors to the seating area and the restrooms. Intermissions for most shows move very quickly and commonly run just 15-20 minutes.

Snacks and Refreshments.

Our menu features soft drinks, bottled water, wine by the glass and a selection of premium domestic beer, imports and craft brews plus a variety of hand crafted cocktails. Our snack menu includes candy, chips, pretzels and fresh baked cookies. For recommended pre-show dining options, please visit the Plan Your Visit page at DPACnc.com

Pre-order Drink Service.

For Broadway shows, DPAC also offers a pre-order drink service. You simply pre-pay for your favorite beverage before the show begins, and it will be ready and waiting for you at the start of intermission.

House Wines and Beer Menu.

Wine Selections:

DPAC's House Wines include highly rated selections of Cabernet, Chardonnay and Pinot Grigio. These are available at all lobby bars and snack and beverage windows. For guests looking for a wider selection, please visit the Skyline Wine and Martini Bar in the Orchestra Lobby.

Beer Selection:

Our snack and beverage windows offer a nice selection of popular premium domestic beers. For a wider selection of specialty and craft beers, please visit any of the lobby bars and in the Skyline Lounge.



Photo Credit: HuthPhoto

Restrooms.

DPAC regularly receives many compliments about our restroom attendants who assist in moving lines quickly so please do not be dissuaded by the lines you might see at the start of intermission.

Content Advisory/Parental Discretion.

DPAC offers a diverse selection of entertainment. Not all productions may appeal to or be appropriate for every guest or for all ages. Ticket buyers should take responsibility for making informed decisions regarding their purchases. We recommend visiting the official website of each show, or for popular Broadway shows, websites like Broadway.com are a good resource to learn more about the show you are coming to see at DPAC. If you ever have questions about the content or appropriateness of a show, please contact us at GuestServices@DPACnc.com

Temperature.

Our temperature settings are designed to achieve a room temperature of 70 to 72 degrees. Our recommendation is to dress comfortably for being in a large crowd, and if you are susceptible to cold, just bring a sweatshirt, light jacket or sweater just in case.

Weather and Events at DPAC.

During winter weather months, all performances scheduled at DPAC normally take place as planned. If weather or travel conditions ever prevent you from attending a show in your season ticket package, DPAC staff will do what they can to make an accommodation of some kind, but this accommodation will vary from show to show. Before purchasing tickets for any events at DPAC, please know that all sales are final. For additional questions please contact GuestServices@DPACnc.com



Photo Credit: HuthPhoto

Important Guest Etiquette

At DPAC we're committed to Guest Courtesy. Please remember to be a good neighbor to those seated around you.



Camera/Recording.

Photography and video recording is prohibited. All electronic devices (cell phones, smart phones, tablets, digital cameras) must be turned off before entering the seating area. Cameras with detachable lens are not allowed into the building, and for some shows no cameras of any kind are allowed including small point-and-shoot cameras.



Entering and Exiting the Seating Area.

During concerts, please time your exits and re-entry to the seating area to occur only at intermission or breaks between songs.



Kids at DPAC.

Please note that all guests require a ticket, regardless of age. Children under the age of 6 are not allowed at most DPAC performances including our Broadway shows. To check specific age restrictions on an individual show please visit the More Info page for that show on our website. For some shows DPAC will make recommendations on the appropriate minimum age based on the content and the length of the event. Parental discretion is always advised and judgment of the appropriateness of the content for each show should be made on an individual basis prior to purchase. Children must be able to sit quietly in their own seat without disturbing other guests. As a further courtesy to our guests, DPAC recommends one parent or chaperone for every one child in attendance..



It Can Wait.

Please also save texting until AFTER the show. The light from phones is distracting to others throughout the theater. Please keep them turned off. Once the show starts, please let the stage be the center of attention. We ask that you silence all cell phones and limit conversation. If children are attending this performance with you, please exit the theater immediately if they become restless or talkative.

Manage Your Seats Online

Your DPAC Account Manager lets you manage your season seats quickly and easily.

Features:

- Renew your season seats and pay invoices
- Manage all seats at a glance
- Update your account information
- Forward tickets to friends, family or clients via email up until two hours before the start of the show
- Purchase extra seats to shows on your season

Seat Exchanges.

Members must give three days advance notice before your scheduled performance, and we'll always do our best to make it easy to exchange seats from your regularly designated performance into another performance of the same show. If exchanging into a higher priced seating location or performance, simply pay any applicable price difference.

Access Your Online Account Today

Step 1: Go to SunTrustBroadway.com and click on Season Seat Member Log-In

Step 2: Log in to Account Manager with the Account ID located on the bottom of each ticket in your package.

Step 3: Start managing your seats – it's that easy!

We Can't Wait to Welcome You Back to DPAC

DPAC is located next to the famous Durham Bulls Athletic Park in the award-winning American Tobacco Historic District. For GPS and internet mapping systems, our address is 123 Vivian Street, Durham, NC 27701.

Complimentary Parking

Complimentary parking for members is provided for each of the SunTrust Broadway shows purchased as part of your season package (Encore Broadway special engagements are not included). This complimentary parking is offered in the American Tobacco North Deck, located 2/10 of a mile west of DPAC. For GPS and internet mapping systems, the parking deck address is 305 West Pettigrew Street, Durham, North Carolina, 27701. Park at no charge and stroll past the waterfalls of the American Tobacco District campus on your way to DPAC. For detailed location and parking maps including turn-by-turn instructions please visit DPACnc.com.

Note: Due to the large number of Season Seat Members, this special parking arrangement is available only at the North Parking Deck. There are more than 3,000 parking spaces in area parking decks, street spaces and surface lots within a 5 to 10 minute walk of DPAC (1/10 to 3/10 of a mile). For a complete list of parking options please visit the Plan Your Visit page at DPACnc.com.

Directions

We're located just three blocks off NC 147/ Durham Freeway, via exits 12B or 13. Freeway access is easy from all parts of the region via I-40 and I-85. For more information and detailed directions and maps, please visit the Plan Your Visit page at DPACnc.com.

Courtesy Shuttle

For guests with mobility impairments or guests uncomfortable walking from our nearby parking areas, DPAC offers a Courtesy Shuttle from the American Tobacco East Deck. This service brings the Shuttle right into the lower level of the East Deck, minimizing walking for those that are uncomfortable with the distance from this parking area to DPAC. You can find more information on this shuttle and view a map of the courtesy shuttle parking area at DPACnc.com.



Photo Credit: Colin Huth

The American Tobacco Historic District

